

The Variable view: Creating a template to capture data into SPSS

Untitled2 [DataSet2] - PASW Statistics Data Editor

File Edit View Data Transform Analyze Direct Marketing Graphs Utilities Add-ons Window Help

	Name	Type	Width	Decimals	Label	Values	Missing	Columns	Align	Measure	Role
1											
2											
3											
4											
5											
6											
7											
8											
9											
10											
11											
12											
13											
14											
15											
16											
17											
18											
19											
20											
21											
22											
23											
24											
25											
26											
27											
28											
29											
30											
31											

Data View

Variable View

PASW Statistics Processor is ready

Research Methodology Workshop

Entering the “value labels”

SPSS Statistics Data Editor window showing the Variable View tab. The variable list includes:

Name	Type	Width	Decimals	Label	Values	Missing	Columns	Align	Measure	Role
Questionnai...	Numeric	11	0	Questionnaire ...	None	None	14	Right	Scale	Input
Q1.1	Numeric	11	0	My work is sati...	{1, Strongly Disagree}...	None	3	Right	Scale	Input
Q1.2	Numeric	11	0		{1, Strongly Disagree}...	None	3	Right	Scale	Input
Q1.3	Numeric	11	0		{1, Strongly Disagree}...	None	3	Right	Scale	Input
Q1.4	Numeric	11	0		{1, Strongly Disagree}...	None	3	Right	Scale	Input
Q1.5	Numeric	11	0		{1, Strongly Disagree}...	None	3	Right	Scale	Input
Q1.6	Numeric	11	0		{1, Strongly Disagree}...	None	3	Right	Scale	Input
Q1.7	Numeric	11	0		{1, Strongly Disagree}...	None	3	Right	Scale	Input
Q1.8	Numeric	11	0		{1, Strongly Disagree}...	None	3	Right	Scale	Input
Q1.9	Numeric	11	0		{1, Strongly Disagree}...	None	3	Right	Scale	Input
Q1.10	Numeric	11	0					Right	Scale	Input
Q2.1	Numeric	11	0					Right	Nominal	Input
Q2.2	Numeric	11	0					Right	Nominal	Input
Q2.3	Numeric	11	0					Right	Nominal	Input
Q2.4	Numeric	11	0					Right	Nominal	Input
Grapes	Numeric	11	0					Right	Scale	Input
Peaches	Numeric	11	0					Right	Scale	Input
Plums	Numeric	11	0					Right	Scale	Input
Cherries	Numeric	11	0					Right	Scale	Input
FruitOther	String	11	0					Right	Scale	Input
FruitOtherN...	Numeric	11	0					Left	Nominal	Input
LandLine	Numeric	11	0		None	None	6	Right	Nominal	Input
CellPhone	Numeric	11	0		None	None	6	Right	Nominal	Input
FaxMachine	Numeric	11	0		None	None	8	Right	Nominal	Input
TransistorR...	Numeric	11	0		None	None	11	Right	Nominal	Input
OtherComm	String	50	0		None	None	8	Left	Nominal	Input
Computer_...	Numeric	11	0		None	None	11	Right	Nominal	Input
Computer_...	Numeric	11	0		None	None	11	Right	Nominal	Input
Internet_Pers	Numeric	11	0		None	None	11	Right	Nominal	Input
Internet_Bus	Numeric	11	0		None	None	11	Right	Nominal	Input
Email_Pers	Numeric	11	0		None	None	11	Right	Nominal	Input

The "Value Labels" dialog box is open, showing the following list:

- 1 = "Strongly Disagree"
- 2 = "Disagree"
- 3 = "Undecided"
- 4 = "Agree"
- 5 = "Strongly Agree"

The dialog box includes fields for "Value:" and "Label:", buttons for "Add", "Change", "Remove", "Spelling...", "OK", "Cancel", and "Help".

Research Methodology Workshop

Completing the template

Example SPSS Data.sav [DataSet1] - PASW Statistics Data Editor

File Edit View Data Transform Analyze Direct Marketing Graphs Utilities Add-ons Window Help

Icons: Save, Print, Paste, Undo, Redo, Find, Sort, Filter, etc.

	Name	Type	Width	Decimals	Label	Values	Missing	Columns	Align	Measure	Role
1	Questionnai...	Numeric	11	0	Questionnaire ...	None	None	11	Right	Scale	Input
2	Q1.1	Numeric	11	0	My work is sati...	{1, Strongly Disagree}...	None	11	Right	Scale	Input
3	Q1.2	Numeric	11	0		{1, Strongly Disagree}...	None	11	Right	Scale	Input
4	Q1.3	Numeric	11	0		{1, Strongly Disagree}...	None	11	Right	Scale	Input
5	Q1.4	Numeric	11	0		{1, Strongly Disagree}...	None	11	Right	Scale	Input
6	Q1.5	Numeric	11	0		{1, Strongly Disagree}...	None	11	Right	Scale	Input
7	Q1.6	Numeric	11	0		{1, Strongly Disagree}...	None	11	Right	Scale	Input
8	Q1.7	Numeric	11	0		{1, Strongly Disagree}...	None	11	Right	Scale	Input
9	Q1.8	Numeric	11	0		{1, Strongly Disagree}...	None	11	Right	Scale	Input
10	Q1.9	Numeric	11	0		{1, Strongly Disagree}...	None	11	Right	Scale	Input
11	Q1.10	Numeric	11	0		{1, Strongly Disagree}...	None	11	Right	Scale	Input
12	Q2.1	Numeric	11	0	Do you have a ...	{1, Yes}...	None	11	Right	Nominal	Input
13	Q2.2	Numeric	11	0		{1, Yes}...	None	11	Right	Nominal	Input
14	Q2.3	Numeric	11	0		{1, Yes}...	None	11	Right	Nominal	Input
15	Q2.4	Numeric	11	0		{1, Yes}...	None	11	Right	Nominal	Input
16	Grapes	Numeric	11	0		None	None	11	Right	Scale	Input
17	Peaches	Numeric	11	0		None	None	11	Right	Scale	Input
18	Plums	Numeric	11	0		None	None	11	Right	Scale	Input
19	Cherries	Numeric	11	0		None	None	11	Right	Scale	Input
20	FruitOther	String	11	0		None	None	11	Left	Nominal	Input
21	FruitOtherN...	Numeric	11	0		None	None	11	Right	Scale	Input
22	LandLine	Numeric	11	0		None	None	11	Right	Nominal	Input
23	CellPhone	Numeric	11	0		None	None	11	Right	Nominal	Input
24	FaxMachine	Numeric	11	0		None	None	11	Right	Nominal	Input
25	TransistorR...	Numeric	11	0		None	None	11	Right	Nominal	Input
26	OtherComm	String	50	0		None	None	11	Left	Nominal	Input
27	Computer_...	Numeric	11	0		None	None	11	Right	Nominal	Input
28	Computer_...	Numeric	11	0		None	None	11	Right	Nominal	Input
29	Internet_Pers	Numeric	11	0		None	None	11	Right	Nominal	Input
30	Internet_Bus	Numeric	11	0		None	None	11	Right	Nominal	Input
31	Email_Pers	Numeric	11	0		None	None	11	Right	Nominal	Input

Data View Variable View

PASW Statistics Processor is ready

Entering the data

Example SPSS Data.sav [DataSet1] - PASW Statistics Data Editor

FileEditViewDataTransformAnalyzeDirect MarketingGraphsUtilitiesAdd-onsWindowHelp

1 : QuestionnaireNumb... 1

Visible: 40 of 40 Variables

	QuestionnaireNumber	Q1.1	Q1.2	Q1.3	Q1.4	Q1.5	Q1.6	Q1.7	Q1.8	Q1.9	Q1.10	Q2.1	Q2.2	Q2.3	Q2.4	Grapes	Peaches	Plums	Cherries	FruitOther	FruitOtherNum	LandLine	CellPho
1	1	3	2	4	4	2	1	1	5	4	3	1	3	2	2	50	.	.	75	Lithis - 20	20	1	
2																							
3																							
4																							
5																							
6																							
7																							
8																							
9																							
10																							
11																							
12																							
13																							
14																							
15																							
16																							
17																							
18																							
19																							
20																							
21																							
22																							
23																							
24																							
25																							
26																							
27																							
28																							
29																							
30																							

Data View

Variable View

PASW Statistics Processor is ready

Research Methodology Workshop

Completing the data capturing

*Example SPSS Data.sav [DataSet1] - PASW Statistics Data Editor

File Edit View Data Transform Analyze Direct Marketing Graphs Utilities Add-ons Window Help

2 : FruitOtherNum Visible: 40 of 40 Variables

	QuestionnaireNumber	Q1.1	Q1.2	Q1.3	Q1.4	Q1.5	Q1.6	Q1.7	Q1.8	Q1.9	Q1.10	Q2.1	Q2.2	Q2.3	Q2.4	Grapes	Peaches	Plums	Cherries	FruitOther	FruitOtherNum	LandLine	CellPho
1	1	3	2	4	4	2	1	1	5	4	3	1	3	2	2	50	.	.	75	Lithis - 20	20	1	.
2	2	3	2	4	4	2	1	1	5	4	5	1	3	2	2	50	.	.	75
3	3	2	4	5	1	4	5	4	1	1	5	2	2	1	1	.	.	400	.	.	.	1	.
4	4	4	5	1	2	4	1	2	3	1	3	1	1	1	3	.	700	1	.
5	5	5	4	4	2	2	3	4	1	5	1	2	3	3	1	1	.
6	6	3	4	4	4	1	3	4	4	3	3	1	3	3	1	.	100	1	.
7	7	2	2	1	1	3	5	5	3	2	2	2	3	1	1	.	.	800	.	.	.	1	.
8	8	1	4	1	2	5	2	3	4	1	2	2	2	1	2	.	.	.	100
9	9	1	1	4	4	4	4	3	2	3	5	2	1	1	1
10	10	3	3	4	3	3	5	1	2	3	2	1	1	1	2	500
11	11	2	2	2	2	4	2	2	4	3	4	2	1	1	3	.	.	.	900	.	.	1	.
12	12	4	4	4	2	2	5	5	5	1	3	1	3	2	1	.	300	1	.
13	13	4	2	3	3	1	2	5	1	5	5	2	3	2	1	100	.	100	.	.	.	1	.
14	14	1	2	5	2	5	2	5	4	2	2	2	3	1	2	900	.	200	200
15	15	4	1	3	1	3	1	3	1	1	4	2	1	2	3	.	100	.	500	.	.	1	.
16	16	1	1	5	5	3	2	4	1	3	5	1	1	3	2	1	.
17	17	3	3	1	4	5	3	5	4	2	5	1	2	1	2	.	.	.	1000
18	18	5	1	4	4	2	2	3	1	4	4	1	1	3	2
19	19	5	2	1	5	4	2	2	1	2	5	2	2	2	1	400	1	.
20	20	5	4	4	5	3	2	5	1	3	5	3	2	3	1	.	800	1	.
21	21	1	2	4	4	2	5	2	3	1	4	1	3	1	1	.	.	100
22	22	3	2	1	4	3	5	5	4	4	3	3	1	3	2
23	23	4	2	4	4	3	1	1	2	2	3	2	3	2	2	1	.
24	24	5	4	3	2	5	5	5	5	4	1	1	3	2	1	700	.	100	.	.	.	1	.
25	25	1	1	1	2	5	1	4	5	2	3	1	1	3	1	.	.	400
26	26	5	3	2	1	5	5	1	4	5	5	1	1	3	1	1	.
27	27	5	4	2	1	4	3	2	3	2	5	1	1	3	1	1	.
28	28	4	4	5	5	1	3	2	2	1	2	1	3	1	3	.	.	400	500
29	29	4	5	1	2	5	4	3	3	2	2	1	1	2	3	.	1000	.	400
30	30	4	1	5	5	5	1	2	3	2	5	1	2	3	2

Data View Variable View

PASW Statistics Processor is ready

Creating Frequency tables 1

Example SPSS Data.sav [DataSet1] - PASW Statistics Data Editor

File Edit View Data Transform Analyze Direct Marketing Graphs Utilities Add-ons Window Help

Reports
Descriptive Statistics
Tables
Compare Means
General Linear Model
Generalized Linear Models
Mixed Models
Correlate
Regression
Loglinear
Neural Networks
Classify
Dimension Reduction
Scale
Nonparametric Tests
Forecasting
Survival
Multiple Response
Missing Value Analysis...
Multiple Imputation
Complex Samples
Quality Control
ROC Curve...
Amos 18...

	Name	Type	Label	Values	Missing	Columns	Align	Measure	Role
1	Questionnai...	Numeric	Questionnaire Number	None	None	14	Right	Scale	Input
2	Q1.1	Numeric	How is satisfying	{1, Strongly Disagree}...	None	3	Right	Scale	Input
3	Q1.2	Numeric		{1, Strongly Disagree}...	None	3	Right	Scale	Input
4	Q1.3	Numeric		{1, Strongly Disagree}...	None	3	Right	Scale	Input
5	Q1.4	Numeric		{1, Strongly Disagree}...	None	3	Right	Scale	Input
6	Q1.5	Numeric		{1, Strongly Disagree}...	None	3	Right	Scale	Input
7	Q1.6	Numeric		{1, Strongly Disagree}...	None	3	Right	Scale	Input
8	Q1.7	Numeric		{1, Strongly Disagree}...	None	3	Right	Scale	Input
9	Q1.8	Numeric		{1, Strongly Disagree}...	None	3	Right	Scale	Input
10	Q1.9	Numeric		{1, Strongly Disagree}...	None	3	Right	Scale	Input
11	Q1.10	Numeric		{1, Strongly Disagree}...	None	3	Right	Scale	Input
12	Q2.1	Numeric	Do you have a TV?	{1, Yes}...	None	3	Right	Nominal	Input
13	Q2.2	Numeric		{1, Yes}...	None	3	Right	Nominal	Input
14	Q2.3	Numeric		{1, Yes}...	None	3	Right	Nominal	Input
15	Q2.4	Numeric		{1, Yes}...	None	3	Right	Nominal	Input
16	Grapes	Numeric		None	None	6	Right	Scale	Input
17	Peaches	Numeric		None	None	6	Right	Scale	Input
18	Plums	Numeric		None	None	4	Right	Scale	Input
19	Cherries	Numeric		None	None	6	Right	Scale	Input
20	FruitOther	String		None	None	6	Left	Nominal	Input
21	FruitOtherN...	Numeric		None	None	10	Right	Scale	Input
22	LandLine	Numeric		None	None	6	Right	Nominal	Input
23	CellPhone	Numeric		None	None	6	Right	Nominal	Input
24	FaxMachine	Numeric		None	None	8	Right	Nominal	Input
25	TransistorR...	Numeric		None	None	11	Right	Nominal	Input
26	OtherComm	String		None	None	8	Left	Nominal	Input
27	Computer_...	Numeric		None	None	11	Right	Nominal	Input
28	Computer_...	Numeric		None	None	11	Right	Nominal	Input
29	Internet_Pers	Numeric		None	None	11	Right	Nominal	Input
30	Internet_Bus	Numeric		None	None	11	Right	Nominal	Input
31	Email_Pers	Numeric		None	None	11	Right	Nominal	Input

Data View Variable View

Analyze PASW Statistics Processor is ready

Creating Frequency Tables 2

*Example SPSS Data.sav [DataSet1] - PASW Statistics Data Editor

File Edit View Data Transform Analyze Direct Marketing Graphs Utilities Add-ons Window Help

Reports
Descriptive Statistics
Tables
Compare Means
General Linear Model
Generalized Linear Models
Mixed Models
Correlate
Regression
Loglinear
Neural Networks
Classify
Dimension Reduction
Scale
Nonparametric Tests
Forecasting
Survival
Multiple Response
Missing Value Analysis...
Multiple Imputation
Complex Samples
Quality Control
ROC Curve...
Amos 18...

Frequencies...
Descriptives...
Explore...
Crosstabs...
Ratio...
P-P Plots...
Q-Q Plots...

	Name	Type	Values	Missing	Columns	Align	Measure	Role
1	Questionnai...	Numeric	None	None	14	Right	Scale	Input
2	Q1.1	Numeric	{1, Strongly Disagree}...	None	3	Right	Scale	Input
3	Q1.2	Numeric	{1, Strongly Disagree}...	None	3	Right	Scale	Input
4	Q1.3	Numeric	{1, Strongly Disagree}...	None	3	Right	Scale	Input
5	Q1.4	Numeric	{1, Strongly Disagree}...	None	3	Right	Scale	Input
6	Q1.5	Numeric	{1, Strongly Disagree}...	None	3	Right	Scale	Input
7	Q1.6	Numeric	{1, Strongly Disagree}...	None	3	Right	Scale	Input
8	Q1.7	Numeric	{1, Strongly Disagree}...	None	3	Right	Scale	Input
9	Q1.8	Numeric	{1, Strongly Disagree}...	None	3	Right	Scale	Input
10	Q1.9	Numeric	{1, Strongly Disagree}...	None	3	Right	Scale	Input
11	Q1.10	Numeric	{1, Strongly Disagree}...	None	4	Right	Scale	Input
12	Q2.1	Numeric	have a TV?	{1, Yes}...	None	3	Right	Nominal
13	Q2.2	Numeric	{1, Yes}...	None	3	Right	Nominal	Input
14	Q2.3	Numeric	{1, Yes}...	None	3	Right	Nominal	Input
15	Q2.4	Numeric	{1, Yes}...	None	3	Right	Nominal	Input
16	Grapes	Numeric	None	None	6	Right	Scale	Input
17	Peaches	Numeric	None	None	6	Right	Scale	Input
18	Plums	Numeric	None	None	4	Right	Scale	Input
19	Cherries	Numeric	None	None	6	Right	Scale	Input
20	FruitOther	String	None	None	6	Left	Nominal	Input
21	FruitOtherN...	Numeric	None	None	10	Right	Scale	Input
22	LandLine	Numeric	None	None	6	Right	Nominal	Input
23	CellPhone	Numeric	None	None	6	Right	Nominal	Input
24	FaxMachine	Numeric	None	None	8	Right	Nominal	Input
25	TransistorR...	Numeric	11	0	None	11	Right	Nominal
26	OtherComm	String	50	0	None	8	Left	Nominal
27	Computer_...	Numeric	11	0	None	11	Right	Nominal
28	Computer_...	Numeric	11	0	None	11	Right	Nominal
29	Internet_Pers	Numeric	11	0	None	11	Right	Nominal
30	Internet_Bus	Numeric	11	0	None	11	Right	Nominal
31	Email_Pers	Numeric	11	0	None	11	Right	Nominal

Data View Variable View

Descriptive Statistics PASW Statistics Processor is ready

Creating Frequency Tables 3

SPSS Statistics Data Editor - Example SPSS Data.sav [DataSet1] - PASW Statistics Data Editor

File Edit View Data Transform Analyze Direct Marketing Graphs Utilities Add-ons Window Help

	Name	Type	Width	Decimals	Label	Values	Missing	Columns	Align	Measure	Role
1	Questionnai...	Numeric	11	0	Questionnaire Number	None	None	14	Right	Scale	Input
2	Q1.1	Numeric	11	0	My work is satisfying	{1, Strongly Disagree}...	None	3	Right	Scale	Input
3	Q1.2	Numeric	11	0		{1, Strongly Disagree}...	None	3	Right	Scale	Input
4	Q1.3	Numeric	11	0		{1, Strongly Disagree}...	None	3	Right	Scale	Input
5	Q1.4	Numeric	11	0		{1, Strongly Disagree}...	None	3	Right	Scale	Input
6	Q1.5	Numeric	11	0						Scale	Input
7	Q1.6	Numeric	11	0						Scale	Input
8	Q1.7	Numeric	11	0						Scale	Input
9	Q1.8	Numeric	11	0						Scale	Input
10	Q1.9	Numeric	11	0						Scale	Input
11	Q1.10	Numeric	11	0						Scale	Input
12	Q2.1	Numeric	11	0						Nominal	Input
13	Q2.2	Numeric	11	0						Nominal	Input
14	Q2.3	Numeric	11	0						Nominal	Input
15	Q2.4	Numeric	11	0						Nominal	Input
16	Grapes	Numeric	11	0						Scale	Input
17	Peaches	Numeric	11	0						Scale	Input
18	Plums	Numeric	11	0						Scale	Input
19	Cherries	Numeric	11	0						Scale	Input
20	FruitOther	String	11	0						Nominal	Input
21	FruitOtherN...	Numeric	11	0						Scale	Input
22	LandLine	Numeric	11	0		None	None	6	Right	Nominal	Input
23	CellPhone	Numeric	11	0		None	None	6	Right	Nominal	Input
24	FaxMachine	Numeric	11	0		None	None	8	Right	Nominal	Input
25	TransistorR...	Numeric	11	0		None	None	11	Right	Nominal	Input
26	OtherComm	String	50	0		None	None	8	Left	Nominal	Input
27	Computer_...	Numeric	11	0		None	None	11	Right	Nominal	Input
28	Computer_...	Numeric	11	0		None	None	11	Right	Nominal	Input
29	Internet_Pers	Numeric	11	0		None	None	11	Right	Nominal	Input
30	Internet_Bus	Numeric	11	0		None	None	11	Right	Nominal	Input
31	Email_Pers	Numeric	11	0		None	None	11	Right	Nominal	Input

1

Data View Variable View

PASW Statistics Processor is ready

Frequencies

Variable(s):

QuestionnaireNumber

Q1.1

Q1.2

Q1.3

Q1.4

Q1.5

Q1.6

Q1.7

Q1.8

Q1.9

Q1.10

☒ Display frequency tables

OK Paste Reset Cancel Help

Statistics... Charts... Format... Bootstrap...

Creating Frequency Tables 4

*Example SPSS Data.sav [DataSet1] - PASW Statistics Data Editor

File Edit View Data Transform Analyze Direct Marketing Graphs Utilities Add-ons Window Help

Questionnaire Number

	Name	Type	Width	Decimals	Label	Values	Missing	Columns	Align	Measure	Role
1	Questionnai...	Numeric	11	0	Questionnaire Number	None	None	14	Right	Scale	Input
2	Q1.1	Numeric	11	0	My work is satisfying	{1, Strongly Disagree}...	None	3	Right	Scale	Input
3	Q1.2	Numeric	11	0		{1, Strongly Disagree}...	None	3	Right	Scale	Input
4	Q1.3	Numeric	11	0		{1, Strongly Disagree}...	None	3	Right	Scale	Input
5	Q1.4	Numeric	11	0		{1, Strongly Disagree}...	None	3	Right	Scale	Input
6	Q1.5	Numeric	11	0		{1, Strongly Disagree}...	None	3	Right	Scale	Input
7	Q1.6	Numeric	11	0		{1, Strongly Disagree}...	None	3	Right	Scale	Input
8	Q1.7	Numeric	11						Right	Scale	Input
9	Q1.8	Numeric	11						Right	Scale	Input
10	Q1.9	Numeric	11						Right	Scale	Input
11	Q1.10	Numeric	11						Right	Scale	Input
12	Q2.1	Numeric	11						Right	Nominal	Input
13	Q2.2	Numeric	11						Right	Nominal	Input
14	Q2.3	Numeric	11						Right	Nominal	Input
15	Q2.4	Numeric	11						Right	Nominal	Input
16	Grapes	Numeric	11						Right	Scale	Input
17	Peaches	Numeric	11						Right	Scale	Input
18	Plums	Numeric	11						Right	Scale	Input
19	Cherries	Numeric	11						Right	Scale	Input
20	FruitOther	String	11						Right	Scale	Input
21	FruitOtherN...	Numeric	11						Left	Nominal	Input
22	LandLine	Numeric	11						Right	Scale	Input
23	CellPhone	Numeric	11						Right	Nominal	Input
24	FaxMachine	Numeric	11	0		None	None	8	Right	Nominal	Input
25	TransistorR...	Numeric	11	0		None	None	11	Right	Nominal	Input
26	OtherComm	String	50	0		None	None	8	Left	Nominal	Input
27	Computer_...	Numeric	11	0		None	None	11	Right	Nominal	Input
28	Computer_...	Numeric	11	0		None	None	11	Right	Nominal	Input
29	Internet_Pers	Numeric	11	0		None	None	11	Right	Nominal	Input
30	Internet_Bus	Numeric	11	0		None	None	11	Right	Nominal	Input
31	Email_Pers	Numeric	11	0		None	None	11	Right	Nominal	Input

QuestionnaireNumber

Q2.1

Q2.2

Q2.3

Q2.4

Grapes

Peaches

Plums

Cherries

FruitOther

FruitOtherNum

Q1.1

Q1.2

Q1.3

Q1.4

Q1.5

Q1.6

Q1.7

Q1.8

Q1.9

Q1.10

Display frequency tables

OK Paste Reset Cancel Help

Statistics... Charts... Format... Bootstrap...

Data View Variable View

PASW Statistics Processor is ready

The output from Frequency Tables

Output1 [Document1] - PASW Statistics Viewer

File Edit View Data Transform Insert Format Analyze Direct Marketing Graphs Utilities Add-ons Window Help

Output
Log
Frequencies
Title
Notes
Active Dataset
Statistics
Frequency Table
Title
My work is sa
Q1.2
Q1.3
Q1.4
Q1.5
Q1.6
Q1.7
Q1.8
Q1.9
Q1.10

```
GET
  FILE='C:\@LaCie\Research\Centre for Postgraduate Studies\FOB Supervisor Seminar\Seminar5
\Example SPSS Data.sav'.
DATASET NAME DataSet1 WINDOW=FRONT.
NEW FILE.
DATASET NAME DataSet2 WINDOW=FRONT.
DATASET ACTIVATE DataSet1.
FREQUENCIES VARIABLES=Q1.1 Q1.2 Q1.3 Q1.4 Q1.5 Q1.6 Q1.7 Q1.8 Q1.9 Q1.10
  /ORDER=ANALYSIS.
```

Frequencies

[DataSet1] C:\@LaCie\Research\Centre for Postgraduate Studies\FOB Supervisor Seminar\Seminar5

Statistics

	My work is satisfying	Q1.2	Q1.3	Q1.4	Q1.5	Q1.6	Q1.7	Q1.8	Q1.9	Q1.10
N Valid	30	30	30	30	30	30	30	30	30	30
Missing	0	0	0	0	0	0	0	0	0	0

Frequency Table

My work is satisfying

	Frequency	Percent	Valid Percent	Cumulative Percent
Valid Strongly Disagree	6	20.0	20.0	20.0
Disagree	3	10.0	10.0	30.0
Undecided	6	20.0	20.0	50.0
Agree	8	26.7	26.7	76.7
Strongly Agree	7	23.3	23.3	100.0
Total	30	100.0	100.0	

Log is visible PASW Statistics Processor is ready H: 7.25, W: 26.75 cm

Creating Descriptive Statistics 1

SPSS Statistics Data Editor - *Example SPSS Data.sav [DataSet1] - PASW Statistics Data Editor

File Edit View Data Transform Analyze Direct Marketing Graphs Utilities Add-ons Window Help

Reports
Descriptive Statistics
Tables
Compare Means
General Linear Model
Generalized Linear Models
Mixed Models
Correlate
Regression
Loglinear
Neural Networks
Classify
Dimension Reduction
Scale
Nonparametric Tests
Forecasting
Survival
Multiple Response
Missing Value Analysis...
Multiple Imputation
Complex Samples
Quality Control
ROC Curve...
Amos 18...

123 Frequencies...
Descriptives...
Explore...
Crosstabs...
Ratio...
P-P Plots...
Q-Q Plots...

	Name	Type	Values	Missing	Columns	Align	Measure	Role
1	Questionnai...	Numeric	None	None	14	Right	Scale	Input
2	Q1.1	Numeric	{1, Strongly Disagree}...	None	3	Right	Scale	Input
3	Q1.2	Numeric	{1, Strongly Disagree}...	None	3	Right	Scale	Input
4	Q1.3	Numeric	{1, Strongly Disagree}...	None	3	Right	Scale	Input
5	Q1.4	Numeric	{1, Strongly Disagree}...	None	3	Right	Scale	Input
6	Q1.5	Numeric	{1, Strongly Disagree}...	None	3	Right	Scale	Input
7	Q1.6	Numeric	{1, Strongly Disagree}...	None	3	Right	Scale	Input
8	Q1.7	Numeric	{1, Strongly Disagree}...	None	3	Right	Scale	Input
9	Q1.8	Numeric	{1, Strongly Disagree}...	None	3	Right	Scale	Input
10	Q1.9	Numeric	{1, Strongly Disagree}...	None	3	Right	Scale	Input
11	Q1.10	Numeric	{1, Strongly Disagree}...	None	4	Right	Scale	Input
12	Q2.1	Numeric	have a TV?	{1, Yes}...	None	3	Nominal	Input
13	Q2.2	Numeric	{1, Yes}...	None	3	Right	Nominal	Input
14	Q2.3	Numeric	{1, Yes}...	None	3	Right	Nominal	Input
15	Q2.4	Numeric	{1, Yes}...	None	3	Right	Nominal	Input
16	Grapes	Numeric	None	None	6	Right	Scale	Input
17	Peaches	Numeric	None	None	6	Right	Scale	Input
18	Plums	Numeric	None	None	4	Right	Scale	Input
19	Cherries	Numeric	None	None	6	Right	Scale	Input
20	FruitOther	String	None	None	6	Left	Nominal	Input
21	FruitOtherN...	Numeric	None	None	10	Right	Scale	Input
22	LandLine	Numeric	None	None	6	Right	Nominal	Input
23	CellPhone	Numeric	None	None	6	Right	Nominal	Input
24	FaxMachine	Numeric	None	None	8	Right	Nominal	Input
25	TransistorR...	Numeric	11	0	None	Right	Nominal	Input
26	OtherComm	String	50	0	None	Left	Nominal	Input
27	Computer_...	Numeric	11	0	None	Right	Nominal	Input
28	Computer_...	Numeric	11	0	None	Right	Nominal	Input
29	Internet_Pers	Numeric	11	0	None	Right	Nominal	Input
30	Internet_Bus	Numeric	11	0	None	Right	Nominal	Input
31	Email_Pers	Numeric	11	0	None	Right	Nominal	Input

Data View Variable View

Descriptives... PASW Statistics Processor is ready

Creating Descriptive Statistics 2

SPSS Statistics Data Editor - *Example SPSS Data.sav [DataSet1] - PASW Statistics Data Editor

File Edit View Data Transform Analyze Direct Marketing Graphs Utilities Add-ons Window Help

Variable View

	Name	Type	Width	Decimals	Label	Values	Missing	Columns	Align	Measure	Role
1	Questionnai...	Numeric	11	0	Questionnaire Number	None	None	14	Right	Scale	Input
2	Q1.1	Numeric	11	0	My work is satisfying	{1, Strongly Disagree}...	None	3	Right	Scale	Input
3	Q1.2	Numeric	11	0		{1, Strongly Disagree}...	None	3	Right	Scale	Input
4	Q1.3	Numeric	11	0		{1, Strongly Disagree}...	None	3	Right	Scale	Input
5	Q1.4	Numeric	11	0		{1, Strongly Disagree}...	None	3	Right	Scale	Input
6	Q1.5	Numeric	11	0		{1, Strongly Disagree}...	None	3	Right	Scale	Input
7	Q1.6	Numeric	11	0		{1, Strongly Disagree}...	None	3	Right	Scale	Input
8	Q1.7	Numeric	11	0		{1, Strongly Disagree}...	None	3	Right	Scale	Input
9	Q1.8	Numeric	11	0		{1, Strongly Disagree}...	None	3	Right	Scale	Input
10	Q1.9	Numeric	11	0		{1, Strongly Disagree}...	None	3	Right	Scale	Input
11	Q1.10	Numeric	11	0				3	Right	Scale	Input
12	Q2.1	Numeric	11	0				3	Right	Nominal	Input
13	Q2.2	Numeric	11	0				3	Right	Nominal	Input
14	Q2.3	Numeric	11	0				3	Right	Nominal	Input
15	Q2.4	Numeric	11	0				3	Right	Nominal	Input
16	Grapes	Numeric	11	0				6	Right	Scale	Input
17	Peaches	Numeric	11	0				6	Right	Scale	Input
18	Plums	Numeric	11	0				6	Right	Scale	Input
19	Cherries	Numeric	11	0				4	Right	Scale	Input
20	FruitOther	String	11	0				6	Right	Scale	Input
21	FruitOtherN...	Numeric	11	0				6	Left	Nominal	Input
22	LandLine	Numeric	11	0		None	None	10	Right	Scale	Input
23	CellPhone	Numeric	11	0		None	None	6	Right	Nominal	Input
24	FaxMachine	Numeric	11	0		None	None	6	Right	Nominal	Input
25	TransistorR...	Numeric	11	0		None	None	8	Right	Nominal	Input
26	OtherComm	String	50	0		None	None	11	Right	Nominal	Input
27	Computer_...	Numeric	11	0		None	None	8	Left	Nominal	Input
28	Computer_...	Numeric	11	0		None	None	11	Right	Nominal	Input
29	Internet_Pers	Numeric	11	0		None	None	11	Right	Nominal	Input
30	Internet_Bus	Numeric	11	0		None	None	11	Right	Nominal	Input
31	Email_Pers	Numeric	11	0		None	None	11	Right	Nominal	Input

Descriptives

Variable(s):

- Grapes
- Peaches
- Plums
- Cherries

Options...

Bootstrap...

Save standardized values as variables

OK Paste Reset Cancel Help

PASW Statistics Processor is ready

Creating Descriptive Statistics 3

SPSS Statistics Data Editor - *Example SPSS Data.sav [DataSet1]

File Edit View Data Transform Analyze Direct Marketing Graphs Utilities Add-ons Window Help

Descriptives: Options

☒ Mean ☐ Sum

Dispersion

☒ Std. deviation ☒ Minimum

☐ Variance ☒ Maximum

☐ Range ☐ S.E. mean

Distribution

☐ Kurtosis ☐ Skewness

Display Order

☒ Variable list

☐ Alphabetic

☐ Ascending means

☐ Descending means

Continue Cancel Help

	Name	Type	Width	Decimals	Label	Values	Missing	Columns	Align	Measure	Role
1	Questionnai...	Numeric	11	0	Questionnaire Number	None	None	14	Right	Scale	Input
2	Q1.1	Numeric	11	0	My work is satisfying	{1, Strongly Disagree}...	None	3	Right	Scale	Input
3	Q1.2	Numeric	11	0		{1, Strongly Disagree}...	None	3	Right	Scale	Input
4	Q1.3	Numeric	11	0		{1, Strongly Disagree}...	None	3	Right	Scale	Input
5	Q1.4	Numeric	11	0		{1, Strongly Disagree}...	None	3	Right	Scale	Input
6	Q1.5	Numeric	11	0		{1, Strongly Disagree}...	None	3	Right	Scale	Input
7	Q1.6	Numeric	11	0		{1, Strongly Disagree}...	None	3	Right	Scale	Input
8	Q1.7	Numeric	11	0		{1, Strongly Disagree}...	None	3	Right	Scale	Input
9	Q1.8	Numeric	11	0		{1, Strongly Disagree}...	None	3	Right	Scale	Input
10	Q1.9	Numeric	11	0		{1, Strongly Disagree}...	None	3	Right	Scale	Input
11	Q1.10	Numeric	11	0		{1, Strongly Disagree}...	None	3	Right	Scale	Input
12	Q2.1	Numeric	11	0			None	3	Right	Nominal	Input
13	Q2.2	Numeric	11	0			None	3	Right	Nominal	Input
14	Q2.3	Numeric	11	0			None	3	Right	Nominal	Input
15	Q2.4	Numeric	11	0			None	3	Right	Nominal	Input
16	Grapes	Numeric	11	0			None	6	Right	Scale	Input
17	Peaches	Numeric	11	0			None	6	Right	Scale	Input
18	Plums	Numeric	11	0			None	4	Right	Scale	Input
19	Cherries	Numeric	11	0			None	6	Right	Scale	Input
20	FruitOther	String	11	0			None	10	Right	Scale	Input
21	FruitOtherN...	Numeric	11	0			None	6	Right	Nominal	Input
22	LandLine	Numeric	11	0			None	6	Right	Nominal	Input
23	CellPhone	Numeric	11	0			None	8	Right	Nominal	Input
24	FaxMachine	Numeric	11	0			None	11	Right	Nominal	Input
25	TransistorR...	Numeric	11	0			None	8	Left	Nominal	Input
26	OtherComm	String	50	0			None	11	Right	Nominal	Input
27	Computer_...	Numeric	11	0			None	11	Right	Nominal	Input
28	Computer_...	Numeric	11	0			None	11	Right	Nominal	Input
29	Internet_Pers	Numeric	11	0			None	11	Right	Nominal	Input
30	Internet_Bus	Numeric	11	0			None	11	Right	Nominal	Input
31	Email_Pers	Numeric	11	0			None	11	Right	Nominal	Input

Data View Variable View

PASW Statistics Processor is ready

The Output from descriptive statistics

*Output1 [Document1] - PASW Statistics Viewer

File Edit View Data Transform Insert Format Analyze Direct Marketing Graphs Utilities Add-ons Window Help

Output

- Log
- Frequencies
 - Title
 - Notes
 - Active Dataset
 - Statistics
 - Frequency Table
 - Title
 - My work is satisfy
 - Q1.2
 - Q1.3
 - Q1.4
 - Q1.5
 - Q1.6
 - Q1.7
 - Q1.8
 - Q1.9
 - Q1.10
- Log
- Descriptives
 - Title
 - Notes
 - Active Dataset
 - Descriptive Statistics

		Frequency	Percent	Valid Percent	Cumulative Percent
Valid	Strongly Disagree	7	23.3	23.3	23.3
	Disagree	9	30.0	30.0	53.3
	Undecided	6	20.0	20.0	73.3
	Agree	5	16.7	16.7	90.0
	Strongly Agree	3	10.0	10.0	100.0
Total		30	100.0	100.0	

Q1.10

		Frequency	Percent	Valid Percent	Cumulative Percent
Valid	Strongly Disagree	2	6.7	6.7	6.7
	Disagree	6	20.0	20.0	26.7
	Undecided	7	23.3	23.3	50.0
	Agree	4	13.3	13.3	63.3
	Strongly Agree	11	36.7	36.7	100.0
Total		30	100.0	100.0	

DESCRIPTIVES VARIABLES=Grapes Peaches Plums Cherries
/STATISTICS=MEAN STDDEV MIN MAX.

Descriptives

[DataSet1] C:\@LaCie\Research\Centre for Postgraduate Studies\FOB Supervisor Seminar\Seminar5

Descriptive Statistics

	N	Minimum	Maximum	Mean	Std. Deviation
Grapes	7	50	900	385.71	337.533
Peaches	6	100	1000	500.00	384.708
Plums	8	100	800	312.50	241.646
Cherries	9	75	1000	416.67	347.985
Valid N (listwise)	0				

PASW Statistics Processor is ready

Saving to MS Word 1 (Exporting)

*Output1 [Document1] - PASW Statistics Viewer

File Edit View Data Transform Insert Format Analyze Direct Marketing Graphs Utilities Add-ons Window Help

Output

- Log
- Frequencies
 - Title
 - Notes
 - Active Dataset
 - Statistics
 - Frequency Table
- Log
- Descriptives
 - Title
 - Notes
 - Active Dataset
 - Descriptive Statistics

GET

```
FILE='C:\@LaCie\Research\Centre for Postgraduate Studies\FOB Supervisor Seminar\Seminar5\Example SPSS Data.sav'.
DATASET NAME DataSet1 WINDOW=FRONT.
NEW FILE.
DATASET NAME DataSet2 WINDOW=FRONT.
DATASET ACTIVATE DataSet1.
FREQUENCIES VARIABLES=Q1.1 Q1.2 Q1.3 Q1.4 Q1.5 Q1.6 Q1.7 Q1.8 Q1.9 Q1.10
/ORDER=ANALYSIS.
```

Frequencies

[DataSet1] C:\@LaCie\Research\Centre for Postgraduate Studies\FOB Supervisor Seminar\Seminar5

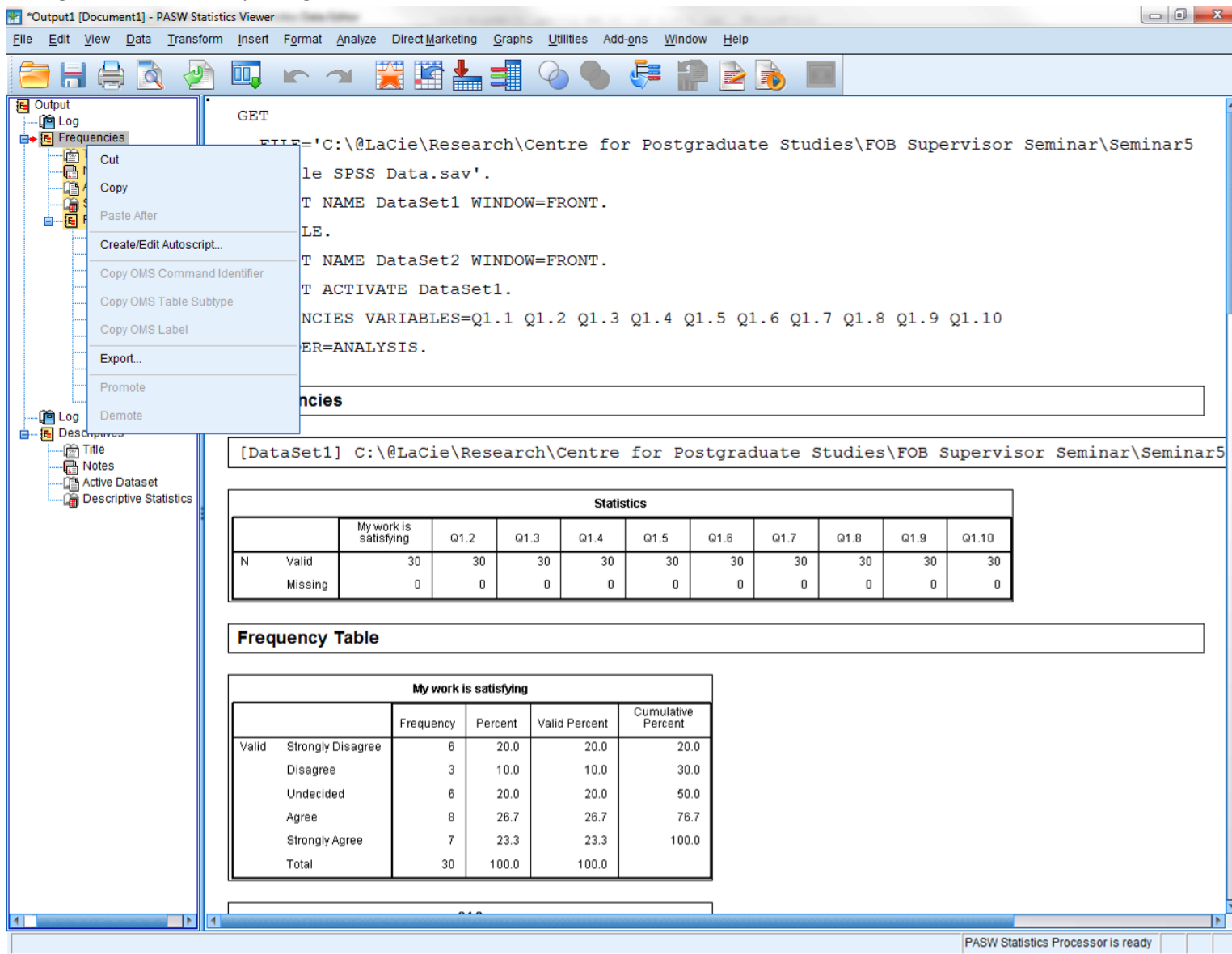
		Statistics									
		My work is satisfying	Q1.2	Q1.3	Q1.4	Q1.5	Q1.6	Q1.7	Q1.8	Q1.9	Q1.10
N	Valid	30	30	30	30	30	30	30	30	30	30
	Missing	0	0	0	0	0	0	0	0	0	0

Frequency Table

My work is satisfying					
		Frequency	Percent	Valid Percent	Cumulative Percent
Valid	Strongly Disagree	6	20.0	20.0	20.0
	Disagree	3	10.0	10.0	30.0
	Undecided	6	20.0	20.0	50.0
	Agree	8	26.7	26.7	76.7
	Strongly Agree	7	23.3	23.3	100.0
	Total	30	100.0	100.0	

PASW Statistics Processor is ready

Saving to MS Word 2 (Exporting)



The screenshot shows the PASW Statistics Viewer interface. The 'Output' pane on the left lists 'Frequencies' under the 'Log' folder. A right-click context menu is open over 'Frequencies', with the 'Export...' option highlighted. The main window displays the SPSS command script for the 'Frequencies' procedure, followed by the 'Statistics' table and the 'Frequency Table'.

Command Script:

```
GET
FILE='C:\@LaCie\Research\Centre for Postgraduate Studies\FOB Supervisor Seminar\Seminar5
le SPSS Data.sav'.
T NAME DataSet1 WINDOW=FRONT.
LE.
T NAME DataSet2 WINDOW=FRONT.
T ACTIVATE DataSet1.
NCIES VARIABLES=Q1.1 Q1.2 Q1.3 Q1.4 Q1.5 Q1.6 Q1.7 Q1.8 Q1.9 Q1.10
ER=ANALYSIS.
```

Statistics

	My work is satisfying	Q1.2	Q1.3	Q1.4	Q1.5	Q1.6	Q1.7	Q1.8	Q1.9	Q1.10
N	Valid	30	30	30	30	30	30	30	30	30
	Missing	0	0	0	0	0	0	0	0	0

Frequency Table

My work is satisfying					
		Frequency	Percent	Valid Percent	Cumulative Percent
Valid	Strongly Disagree	6	20.0	20.0	20.0
	Disagree	3	10.0	10.0	30.0
	Undecided	6	20.0	20.0	50.0
	Agree	8	26.7	26.7	76.7
	Strongly Agree	7	23.3	23.3	100.0
	Total	30	100.0	100.0	

PASW Statistics Processor is ready

Saving to MS Word 3 (Exporting)

SPSS Statistics Processor is ready

File Edit View Data Transform Insert Format Analyze Direct Marketing Graphs Utilities Add-ons Window Help

Output

- Log
- Frequencies
 - Title
 - Notes
 - Active Dataset
 - Statistics
 - Frequency Table
 - Title
 - My work is satisf...
 - Q1.2
 - Q1.3
 - Q1.4
 - Q1.5
 - Q1.6
 - Q1.7
 - Q1.8
 - Q1.9
 - Q1.10
- Log
- Descriptives
 - Title
 - Notes
 - Active Dataset
 - Descriptive Statistics

GET

Export Output

Objects to Export

☐ All ☐ All visible ☒ Selected

Document

Type: Word/RTF (*.doc)

Options:

Layers in Pivot Tables	Honor Print Layer setting (set in ...
Wide Pivot Tables	Do not adjust width
Include Footnotes and Caption	Yes
Views of Models	Honor print setting (set in Model ...
Page measurement units	Millimeters
Page orientation	Portrait
Page width	209.99999999999994
Page height	297.0

Change Options...

File Name:

C:\LaCielResearch\Research Academic\RodneyDuffett\Cronbachs and tests and anovas.doc

Browse...

Graphics

Type: PNG file (*.png)

Options:

No options available

Change Options...

Root File Name:

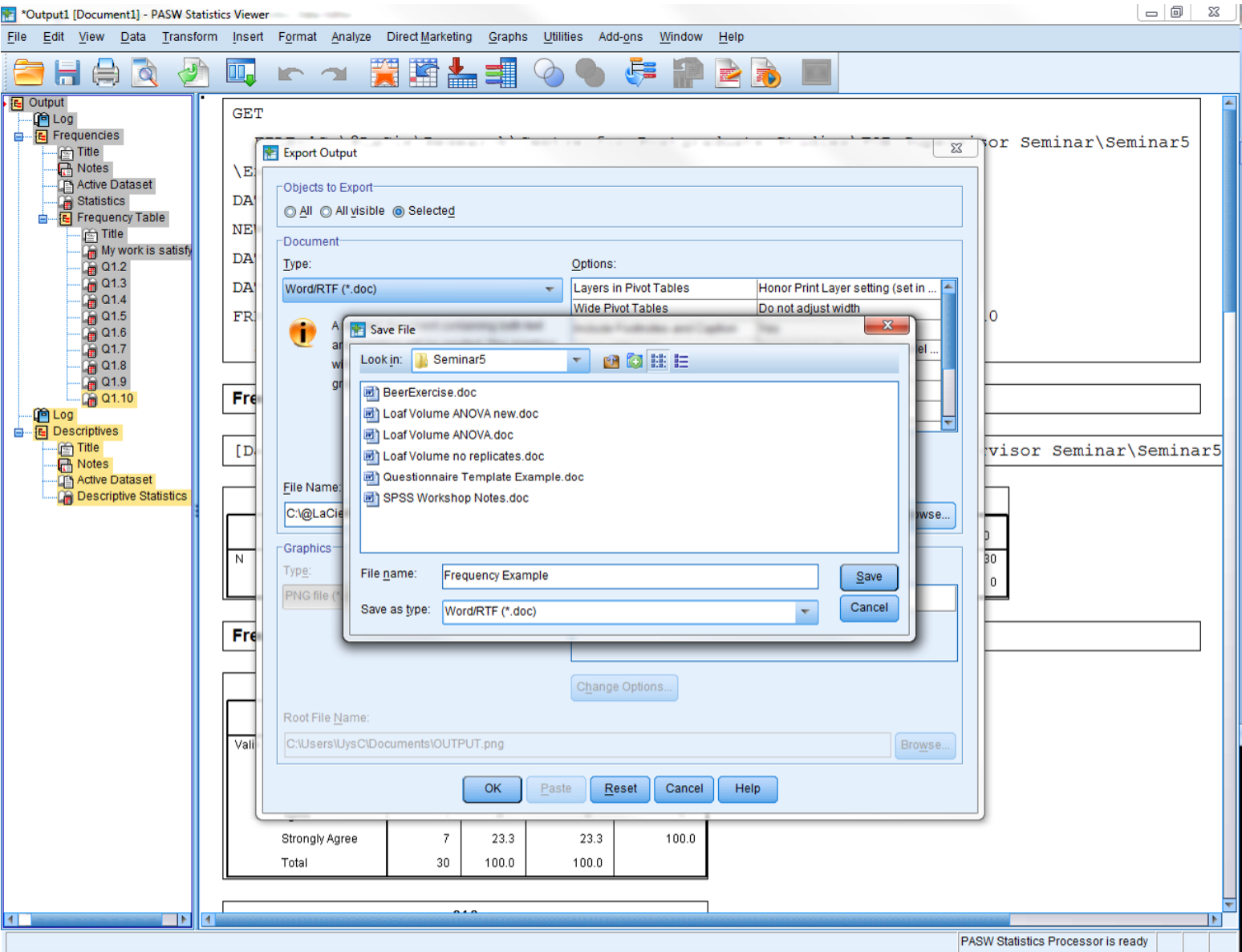
C:\Users\UysC\Documents\OUTPUT.png

Browse...

OK Paste Reset Cancel Help

Strongly Agree	7	23.3	23.3	100.0
Total	30	100.0	100.0	

Saving to MS Word 4 (Exporting)



Saving to MS Word 5 (Exporting)

Output1 [Document1] - PASW Statistics Viewer

File Edit View Data Transform Insert Format Analyze Direct Marketing Graphs Utilities Add-ons Window Help

Output

- Log
- Frequencies
 - Title
 - Notes
 - Active Dataset
 - Statistics
 - Frequency Table
 - Title
 - My work is satisfy
 - Q1.2
 - Q1.3
 - Q1.4
 - Q1.5
 - Q1.6
 - Q1.7
 - Q1.8
 - Q1.9
 - Q1.10
- Descriptives
 - Title
 - Notes
 - Active Dataset
 - Descriptive Statistics

GET

Export Output

Objects to Export

☐ All ☐ All visible ☒ Selected

Document

Type: Word/RTF (*.doc)

Options:

Layers in Pivot Tables	Honor Print Layer setting (set in ...
Wide Pivot Tables	Do not adjust width
Include Footnotes and Caption	Yes
Views of Models	Honor print setting (set in Model ...
Page measurement units	Millimeters
Page orientation	Portrait
Page width	209.99999999999994
Page height	297.0

Change Options...

File Name:

D:\LaCie\Research\Centre for Postgraduate Studies\FOB Supervisor Seminar\Seminar5\Frequency Example.doc

Browse...

Graphics

Type: PNG file (*.png)

Options:

No options available

Change Options...

Root File Name:

C:\Users\UysC\Documents\OUTPUT.png

Browse...

OK Paste Reset Cancel Help

Strongly Agree	7	23.3	23.3	100.0
Total	30	100.0	100.0	

PASW Statistics Processor is ready